



PRELIMINARY PROGRAMME OF CONFERENCES

mapic®
The international market for retail real estate
16th edition
**17-18-19
November
2010**
Palais des Festivals, Cannes, France
www.mapic.com

■ Learning sessions ■ Matchmaking sessions ■ Events

TUESDAY 16 NOVEMBER

19.00 Opening cocktail

WEDNESDAY 17 NOVEMBER

10.30 11.15 Retail trends & forecasts
Co-org: Deloitte

10.30 11.30 Spotlight on Cities

11.30 12.15 Overseas success of French retail : between tradition and modernity
Co-org: Procos

11.45 12.45 Speed Matching: 5 Retail concepts

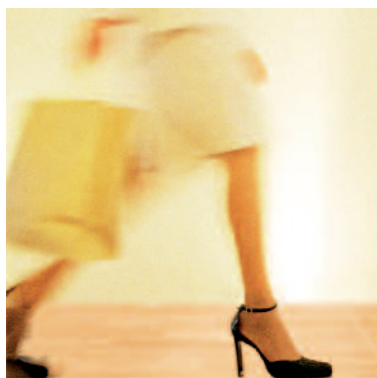
14.45 15.30 Retail in France: a core market with remarkable perspectives
Co-org: GfKGeoMarketing

14.30 15.30 Speed Matching: 5 Shopping centres

15.45 16.30 Retail keynote address

15.30 16.30 Italy, development is back
Co-org: CNCC Italy

16.45 17.30 Retail concepts: the thrill of the new
Co-org: RLI



* By invitation only

Access to MAPIC 2010 conferences is free of charge for all registered delegates on presentation of their MAPIC 2010 badge, within the limit of space available.
Programme as of 9 July 2010 - All information can change at any time.

THURSDAY 18 NOVEMBER

10.00 10.45 Investment panel
Co-org: Property Finance Europe

10.00 11.00 Spotlight on Cities

11.00 11.45 Restoring the vitality of smaller UK town centres
Co-org: Cushman & Wakefield

11.15 12.00 Geographical focus - Brazil

11.00 13.00 Cities Think Tank
"Working toward sustainable urban retail"*

12.00 13.00 Speed Matching: 5 Retail concepts

12.00 12.45 Geographical focus - Russia
Co-org: Russian Council of Shopping Centers

14.30 15.30 Speed Matching: 5 Retail concepts

15.45 16.30 Retail keynote address

15.30 16.15 Geographical focus - Poland
Co-org: Polish Council of Shopping Centers

16.15 17.15 Spotlight on Cities

16.30 17.15 Master Franchise in emerging markets

18.30 MAPIC Award Prize-Giving

22.00 MAPIC Awards party

FRIDAY 19 NOVEMBER

10.30 11.30 Speed Matching: 5 Shopping centers

11.30 12.15 Wrap up keynote session
Chris Igwe, Head of Retail, Senior Director European Retail Leasing, EMEA, CB Richard Ellis